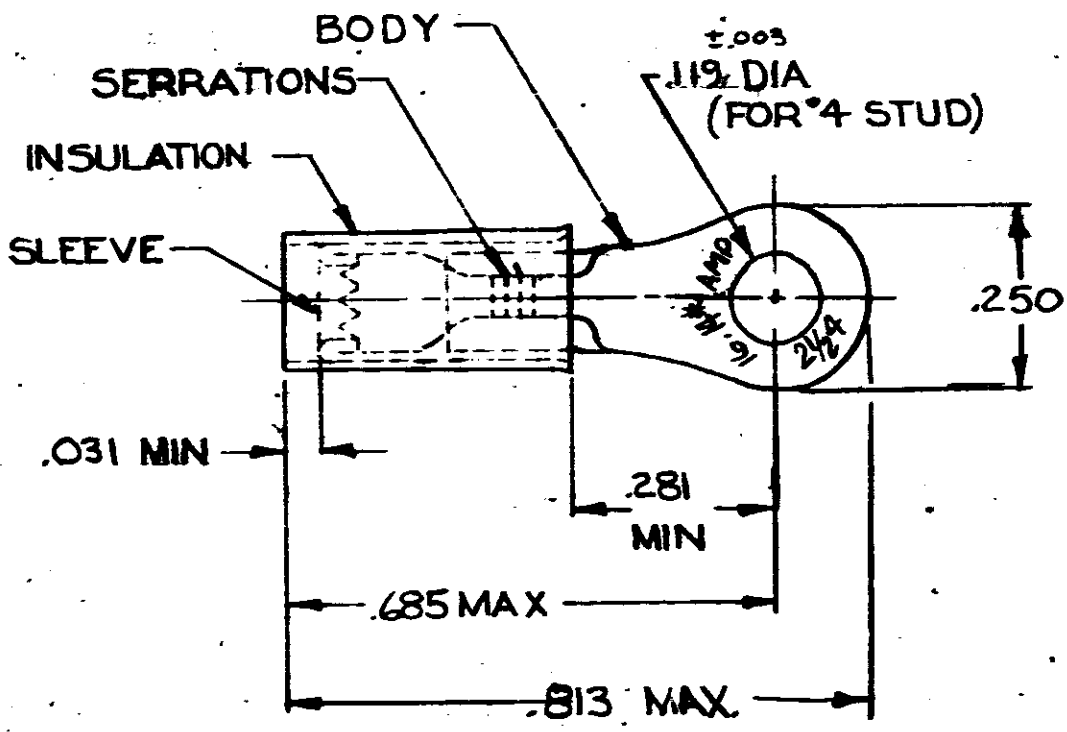


LOC  
6


© 1965 BY AMP INCORPORATED. ALL RIGHTS RESERVED. AMP PRODUCTS COVERED BY PATENTS AND/OR PATENTS PENDING.

REVISIONS

LTR	DESCRIPTION	DATE	APPROVED
C	REDRAWN REV. ADDED TAPE NO. B-630	4-1-70	FCY
D	INACTIVATED 2--1 P-9261	PMF 2-17-82	PMF
E	OBS. 2--1 REV G2588	BT 10-9-87	PMF



FOR .105 TO .150 WIRE INSULATION DIA.  
TONGUE MATERIAL THK. = .031<sup>±.002</sup>

1	323676 ON TAPE	<del>323676</del>	OBSELETE	BODY & SLEEVE: COPPER (QQ-C-576) TIN PL (MIL-T-10727)
1	WIRE TERMINAL	323676		INSULATION: NYLON (MIL-M-20693) TYPE I COLOR: BLUE
QTY	DESCRIPTION	PART NO.	MATERIAL & FINISH	
UNLESS OTHERWISE SPECIFIED DIMENSIONS ARE IN INCHES TOLERANCES ON: DECIMALS ± .008 ANGLES ± 5°		CONTRACT NO. 3-20-70	 AMP INCORPORATED HARRISBURG, PENNSYLVANIA	
MATERIAL <b>SEE TABLE</b>		DR. <i>Steve Karty</i>		
		CHK. <i>[Signature]</i>	NAME WIRE TERMINAL P.I.D.G-RING TONGUE WIRE SIZE: 16-14	
		APPD. <i>[Signature]</i>	SIZE	
		REL. <i>[Signature]</i>	CODE IDENT NO. 00779	NUMBER 323676
		DATE APPD. <i>[Signature]</i>	NTS CUSTOMER DRAWING OF 1	
		OTHER APPD.		

323676